

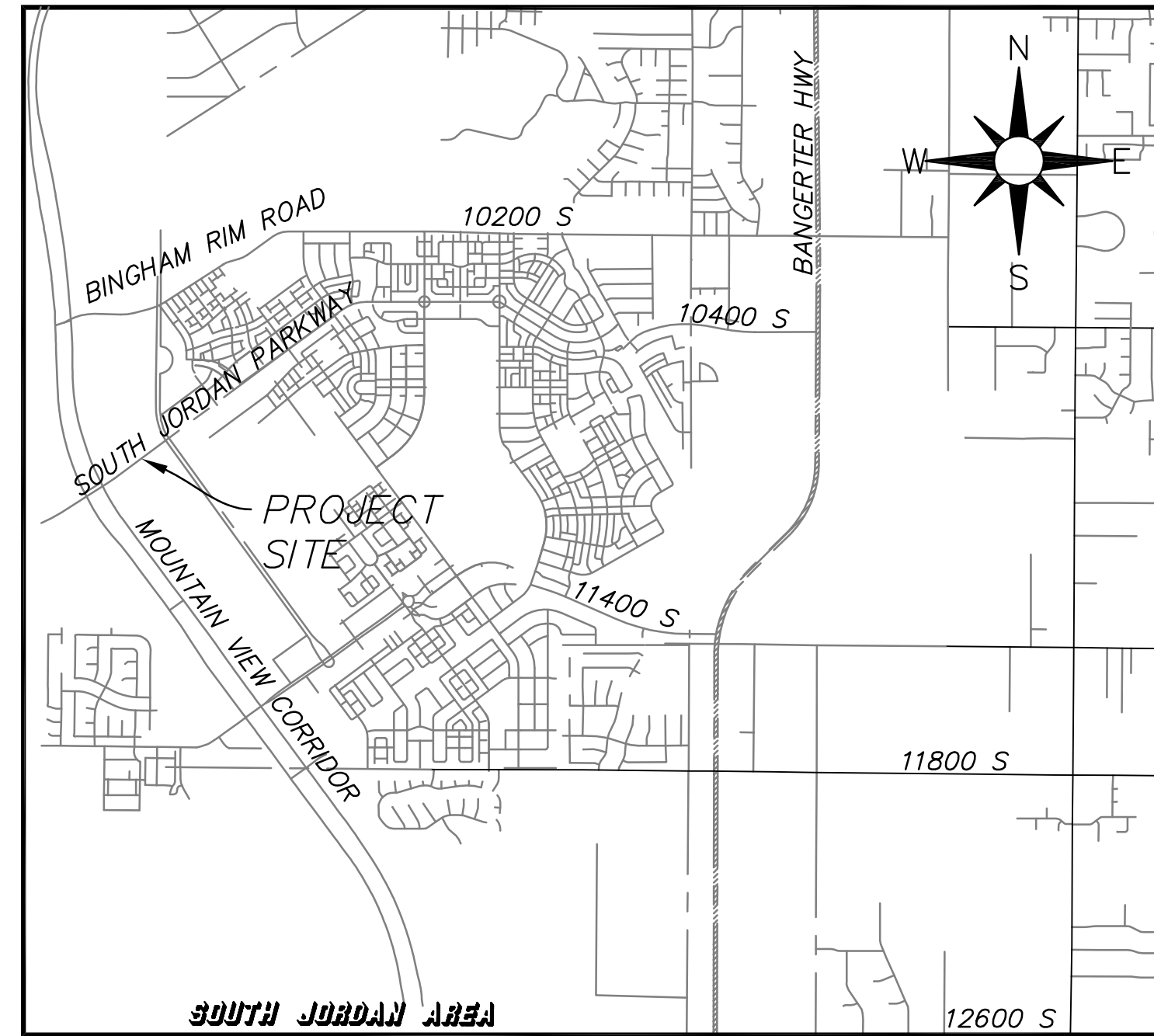


# Rio Tinto

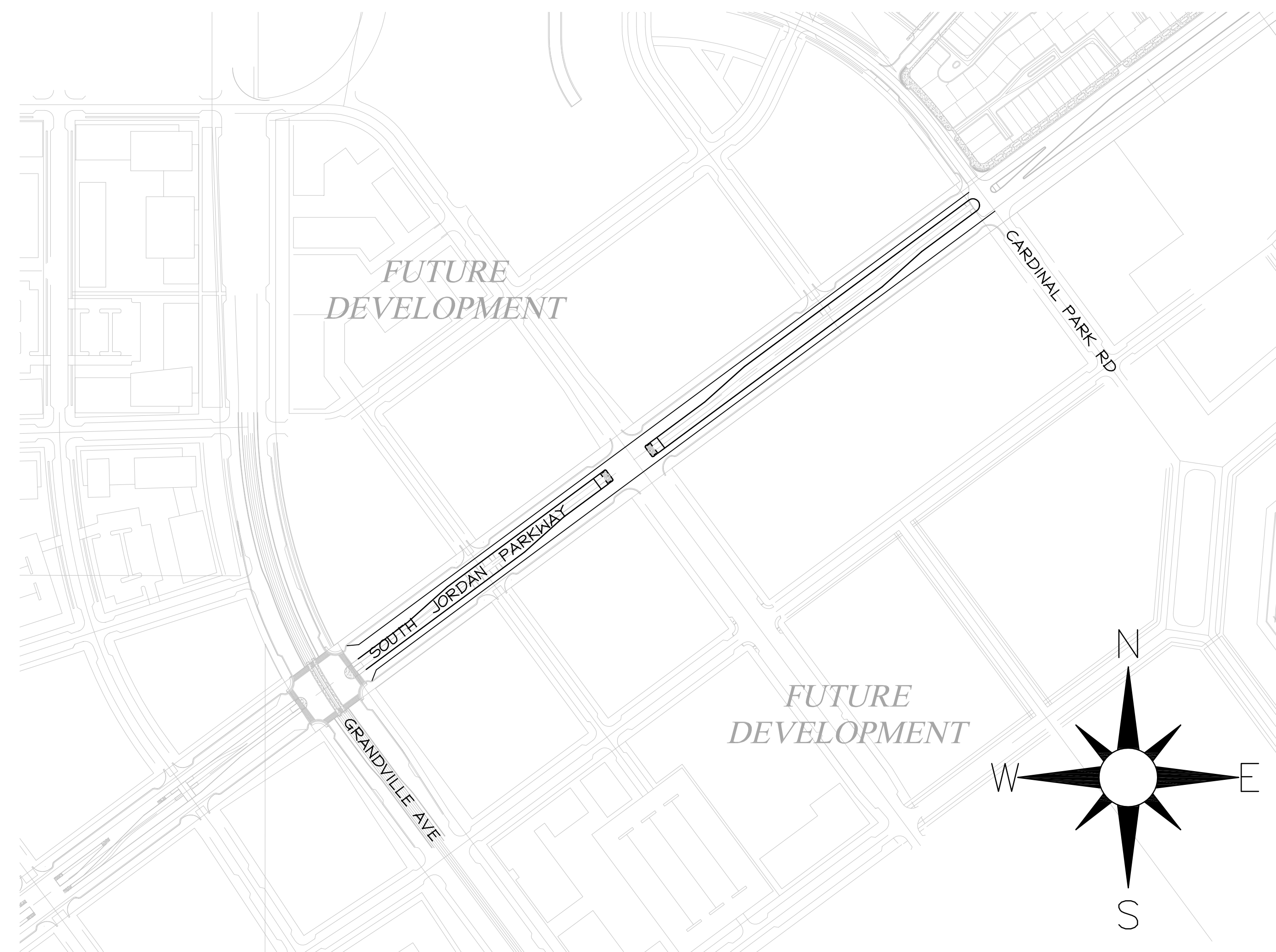
## Kennecott Land

### DAYBREAK SOUTH JORDAN PARKWAY SEGMENT # 2 CARDINAL PARK ROAD TO GRANDVILLE AVENUE

*Residential Development*  
South Jordan, Utah  
**CONSTRUCTION PLANS**  
AUGUST 26, 2015



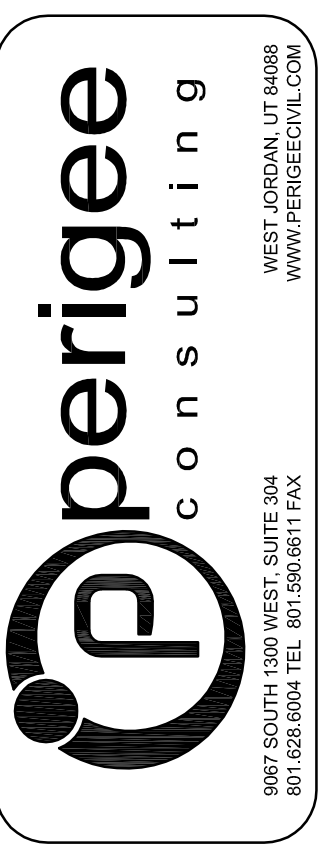
**VICINITY MAP**



**SITE MAP**

SHEET INDEX		
SHEET NUMBER	SHEET TITLE	SHEET DESCRIPTION
01	TC01	COVER SHEET
02	GN01	GENERAL NOTES
03	GN02	GENERAL NOTES
04	GN03	TYPICAL ROAD SECTIONS
05	GR01	OVERALL GRADING PLAN
06	PP01	PLAN AND PROFILE
07	PP02	PLAN AND PROFILE
08	EC01	EROSION CONTROL PLAN
09	DT01	DETAILS

**NOT FOR CONSTRUCTION**



**SOUTH JORDAN CITY**

CITY ENGINEER

DATE	APPR.	MARK	DESCRIPTION

DESIGNED BY: SAS	DATE: AUGUST 2015	REV:
DRAWN BY: SKS	COORDINATOR: JTA	
SUBMITTED BY: JTA	CONTRACT NO: 00439	
FILE NAME: N:\00182_Daybreak\00439\South Jordan Parkway\Segment #2\VT1.TED	PROJECT DATE: 8/27/2015 @ 8:33:09 AM	
SIZE: A3		

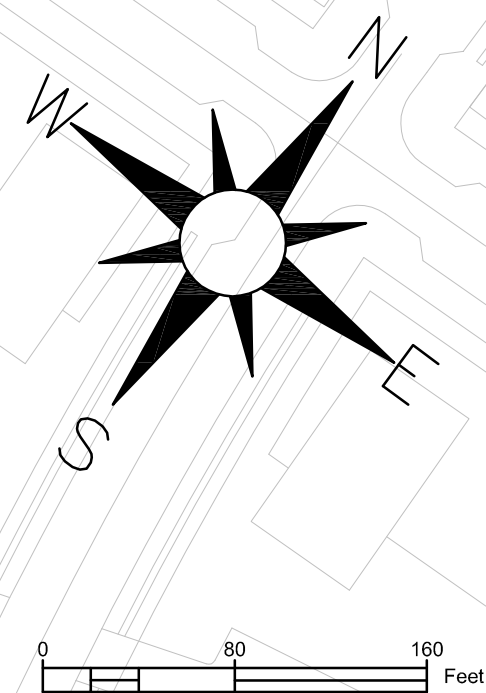
DAYBREAK  
SOUTH JORDAN PARKWAY  
SEGMENT 2  
COVER SHEET

SHEET NUMBER  
01  
OF 09 SHEETS  
DRAWING NAME  
TC01





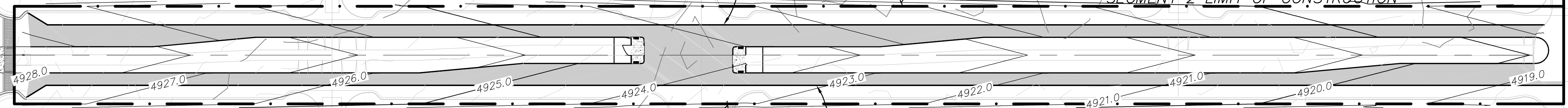




GRANDVILLE AVE

CARDINAL PARK AVE

SOUTH JORDAN PARKWAY



NOT FOR CONSTRUCTION

SOUTH JORDAN CITY

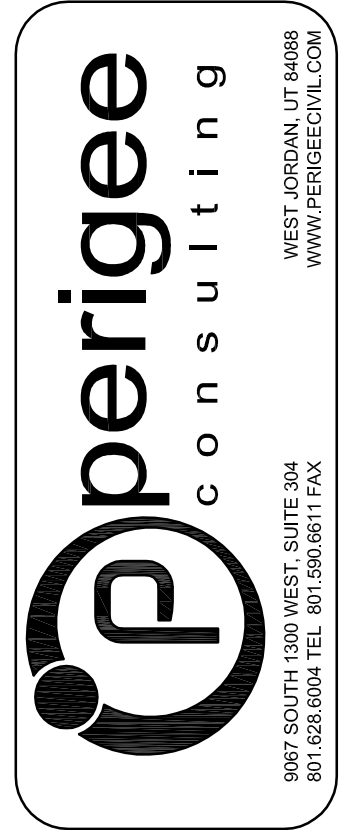
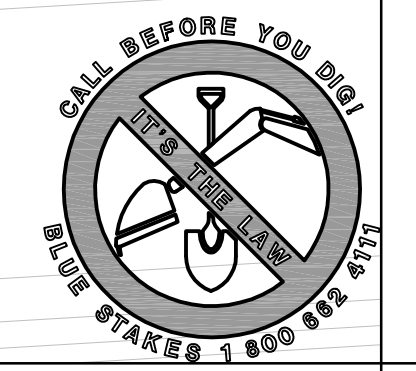
CITY ENGINEER DATE

MARK	DESCRIPTION	DATE	APPR.

DESIGNED BY: SAS	DATE: AUGUST 2015	REV:
DRAWN BY: SKS	CITY BY: JTA	SUBMITTANCE:
SUBMITTED BY:	CONTRACT NO: 00439	
FILE NAME: N:\00182 Daybreak\00439\South Jordan Parkway\Segment 2\GR01	PROJECT DATE: 8/27/2015 8:34:30 AM	
SIZE: A3	PLOTTED BY:	
VERSION:		

DAYBREAK  
SOUTH JORDAN PARKWAY  
SEGMENT 2  
OVERALL GRADING PLAN

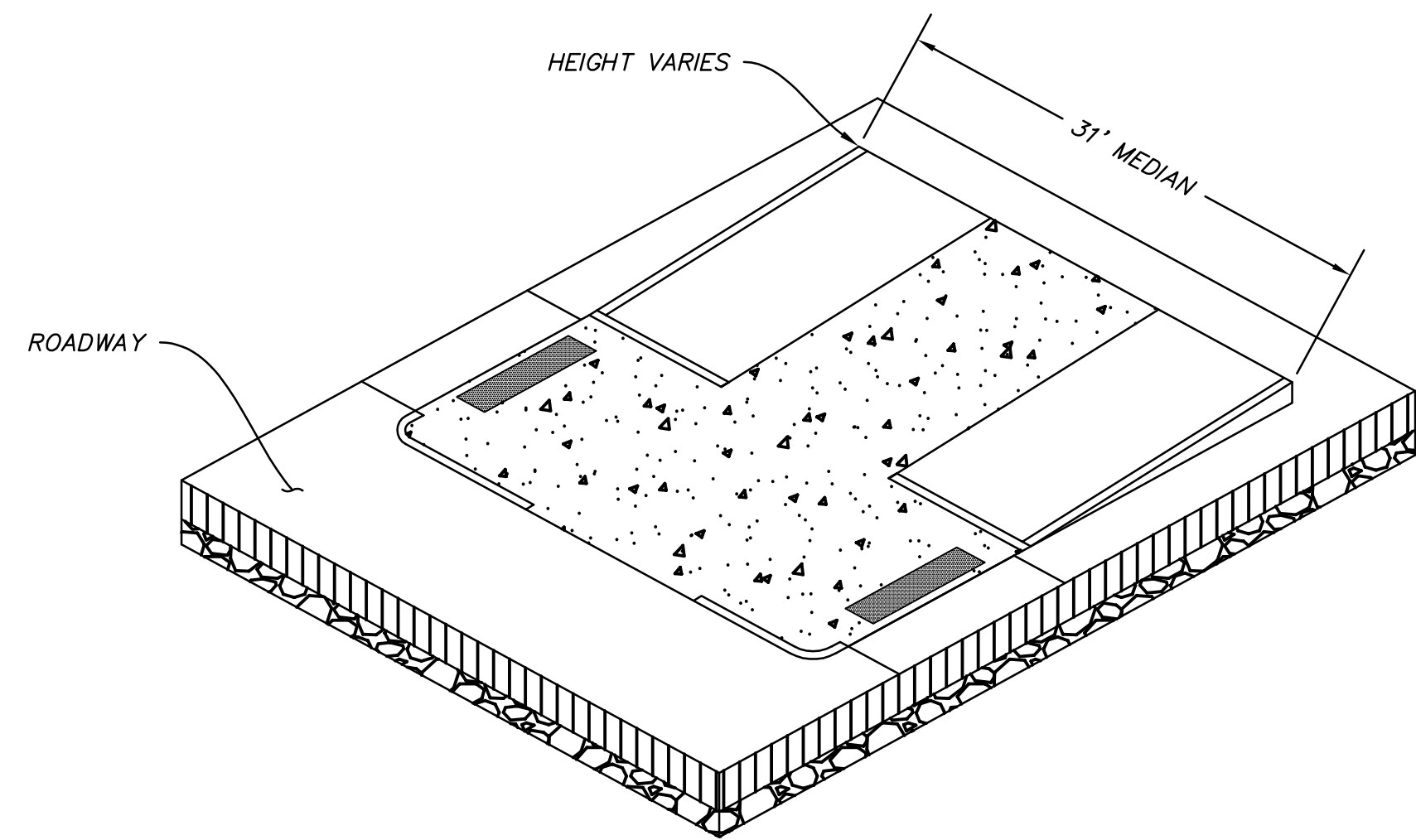
SHEET NUMBER  
05  
OF 09 SHEETS  
DRAWING NAME  
GR01



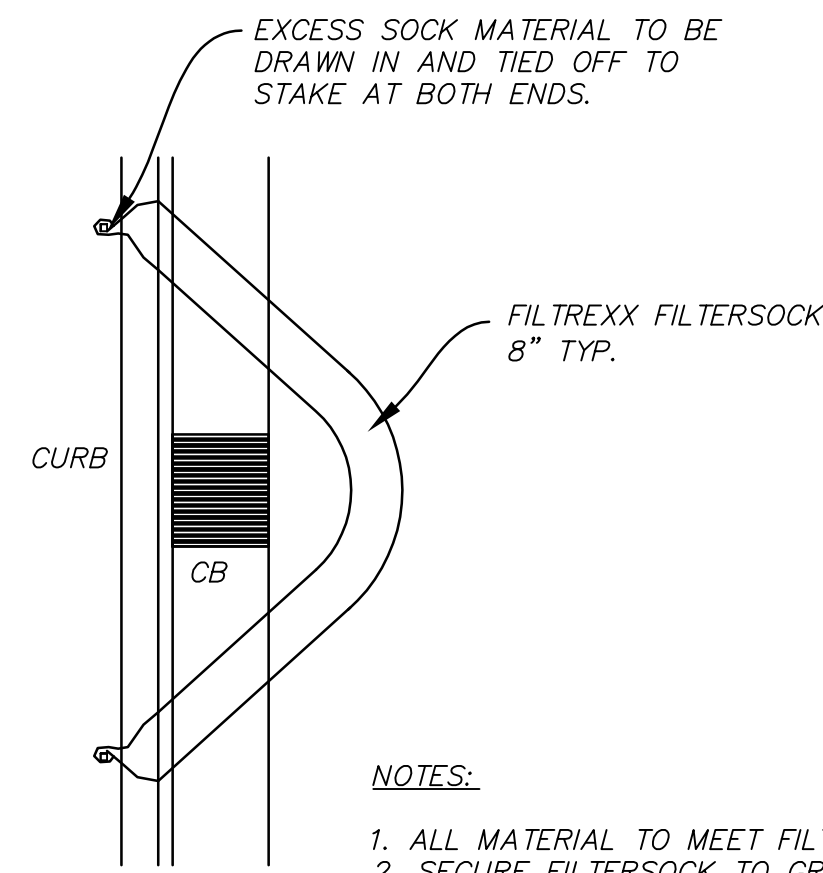




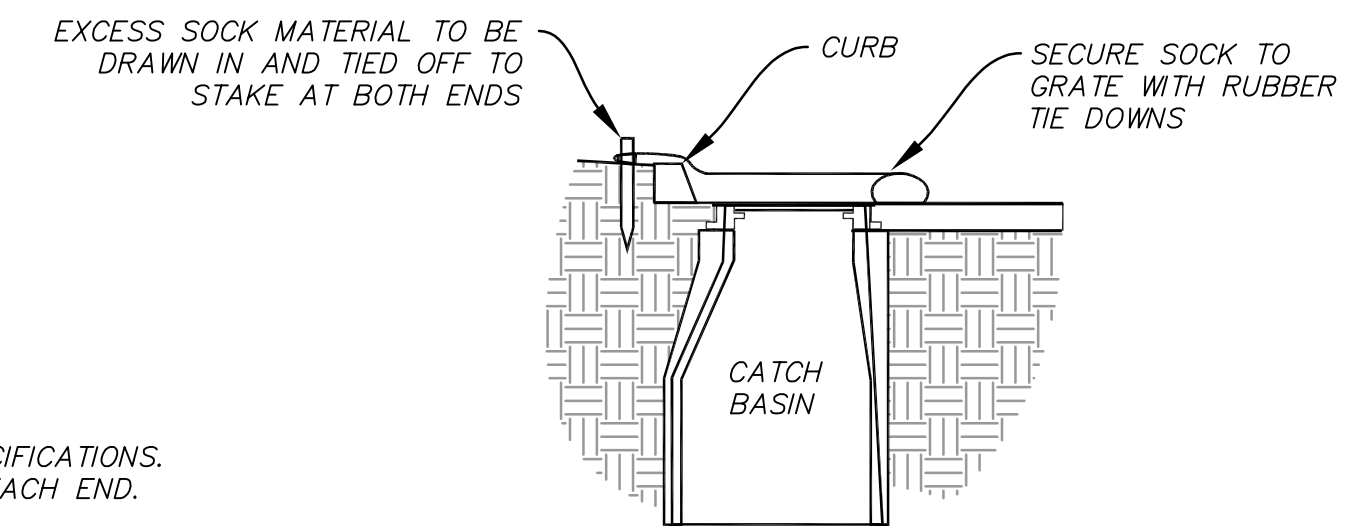




**D**  
**VAR** **MEDIAN ISLAND RAMP**  
SCALE: N.T.S.



**PLAN VIEW**



**SECTION VIEW**

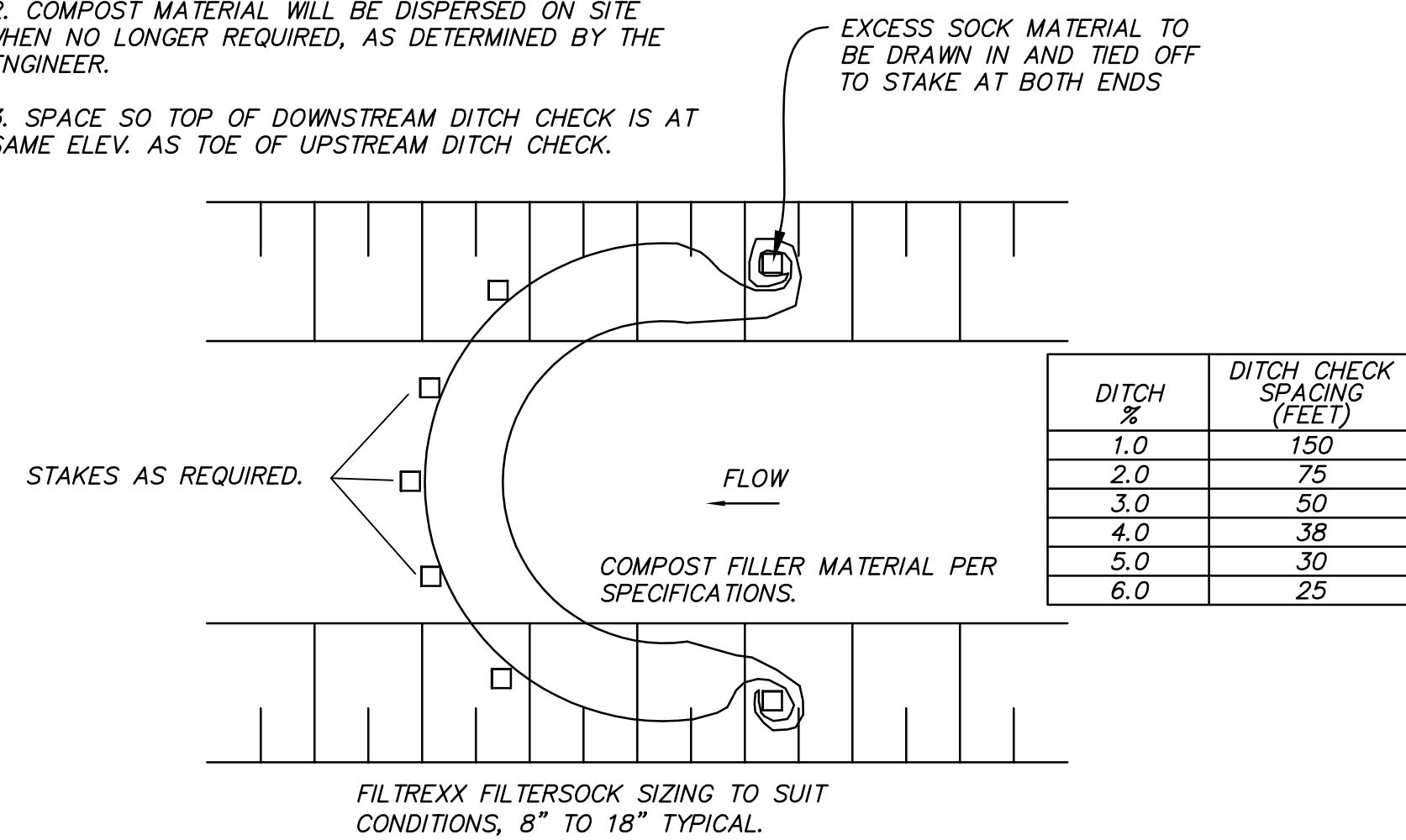
**NOTES:**  
1. ALL MATERIAL TO MEET FILTREXX SPECIFICATIONS.  
2. SECURE FILTERSOCK TO GROUND AT EACH END.

**FILTREXX INLET PROTECTION  
-CURB INLET**

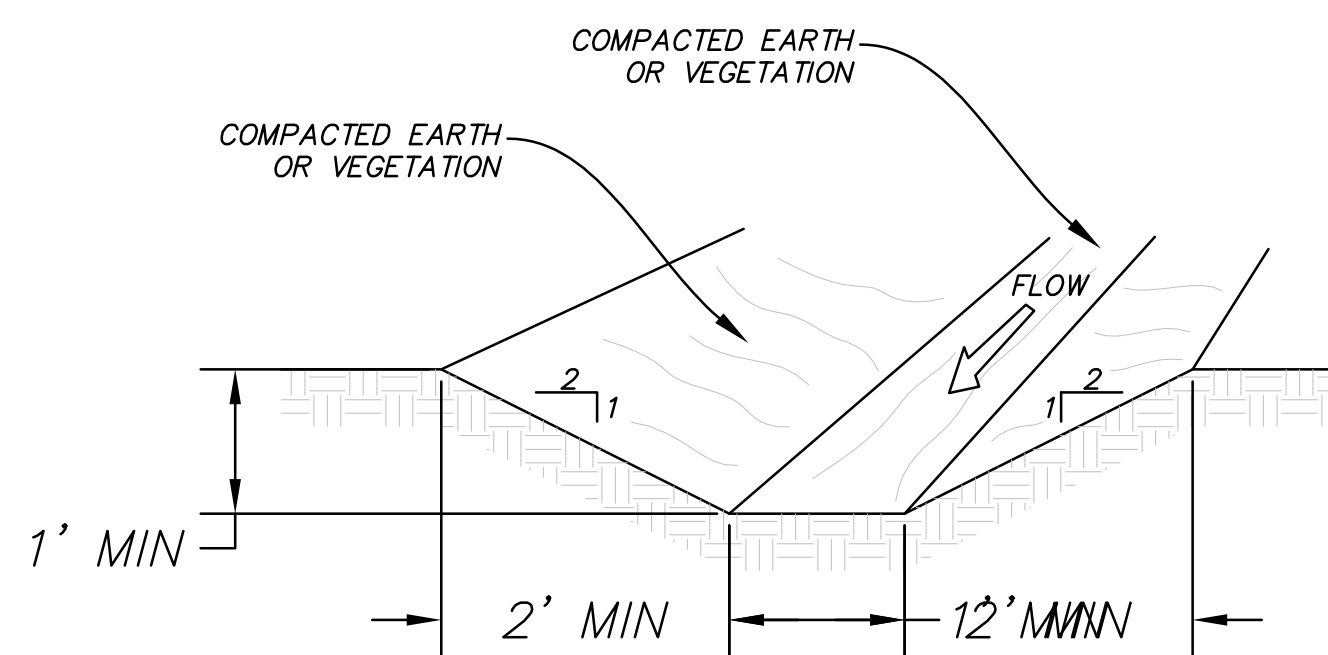
**QQ**  
**VAR** NOT TO SCALE

**NOTES:**

1. ALL MATERIAL TO MEET FILTREXX SPECIFICATIONS.
2. COMPOST MATERIAL WILL BE DISPERSED ON SITE WHEN NO LONGER REQUIRED, AS DETERMINED BY THE ENGINEER.
3. SPACE SO TOP OF DOWNSTREAM DITCH CHECK IS AT SAME ELEV. AS TOE OF UPSTREAM DITCH CHECK.



**PP**  
**VAR** **TYPICAL FILTREXX DITCH CHECK**  
NOT TO SCALE



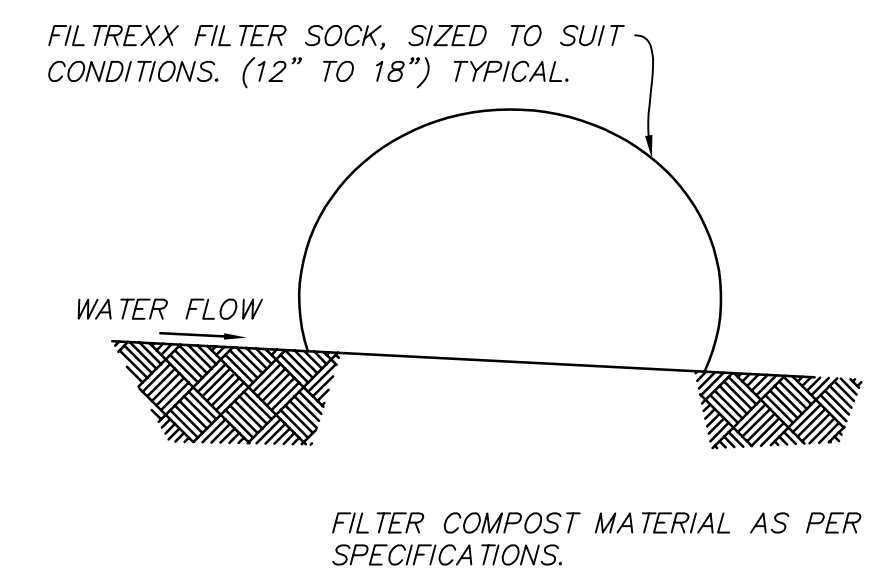
**NOTE:** INSTALL FILTREXX DITCH CHECKS AS SHOWN ON PLANS PER DETAIL PP/ER02

**TEMPORARY INTERCEPTOR  
DITCH AND FILTREXX DITCH CHECK**

**OO**  
**VAR** NOT TO SCALE

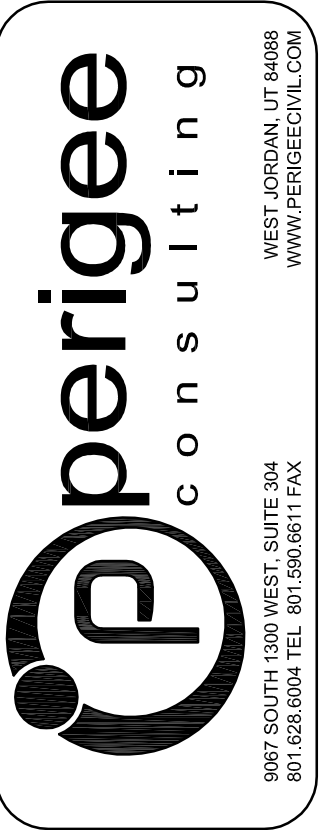
**NOTES:**

1. ALL MATERIAL TO MEET FILTREXX SPECIFICATIONS.
2. THE CONTRACTOR SHALL MAINTAIN THE COMPOST FILTER BERM IN A FUNCTIONAL CONDITION AT ALL TIMES AND IT SHALL BE ROUTINELY INSPECTED.
3. BERM WILL BE REGULARLY INSPECTED AND REPAIRED AS NECESSARY.
4. THE CONTRACTOR SHALL REMOVE SEDIMENT COLLECTED AT THE BASE OF THE BERM WHEN THEY REACH 1/3 OF THE EXPOSED HEIGHT OF THE BERM, OR AS DIRECTED BY THE ENGINEER.
5. THE COMPOST FILTER BERM WILL BE DISPERSED ON SITE WHEN NO LONGER REQUIRED, AS DETERMINED BY THE ENGINEER.



**NN**  
**VAR** **FILTREXX SEDIMENT CONTROL DETAIL**  
NOT TO SCALE

**NOT FOR CONSTRUCTION**



**SOUTH JORDAN CITY**

CITY ENGINEER DATE

NO.	DATE	DESCRIPTION	MARK	DATE	APPR.

DESIGNED BY: SAS	DATE: AUGUST 2015	REV:
DRAWN BY: SKS	CITY BY: JTA	SUBMITTAL NO: 00439
FILE NAME: N:\00182_Daybreak\00439\South Jordan Parkway\Segment #2\01 DT01	PLotted BY: N/A	PLotted DATE: 8/27/2015 8:36:35 AM

**DAYBREAK  
SOUTH JORDAN PARKWAY  
SEGMENT 2  
DETAILS**

SHEET NUMBER  
**09**  
OF 09 SHEETS  
DRAWING NAME  
**DT01**

